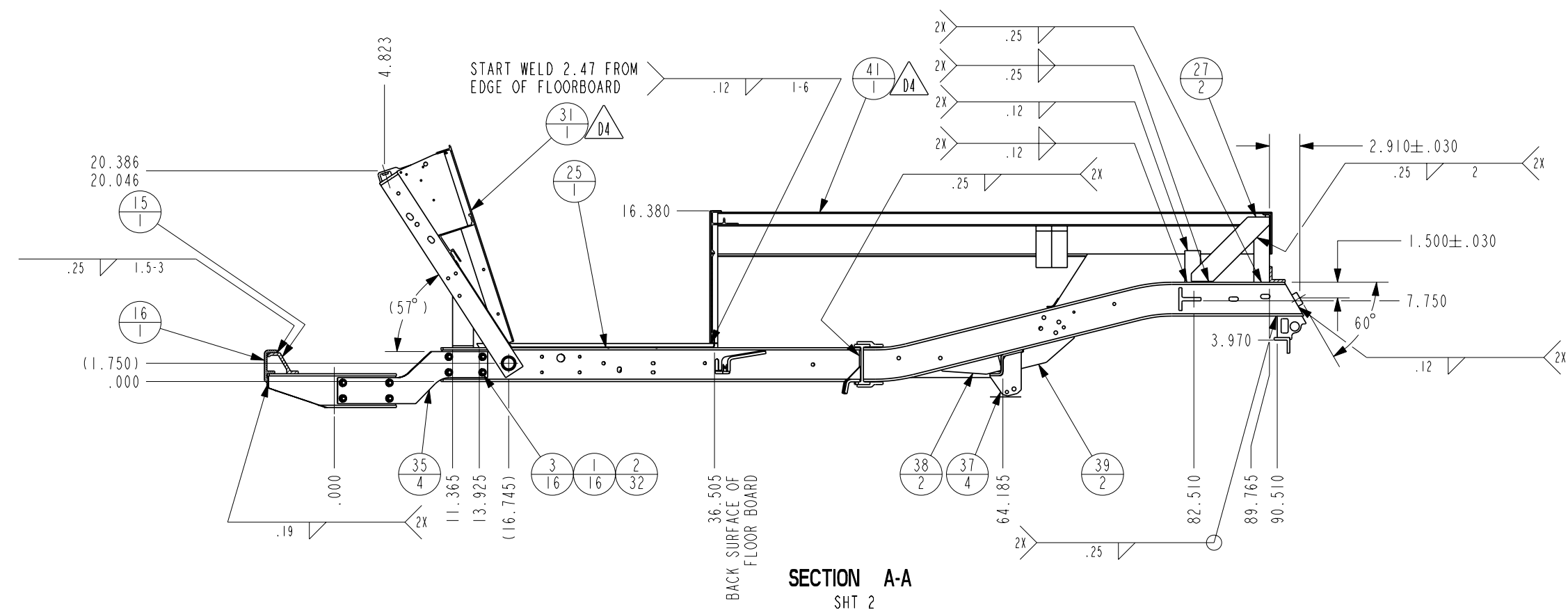


1	23	101844301	PLATE-BATTERY
1	24	101847601	CABLE MTG BRACKET
1	25	101848502	FLOORBOARD W/HOLE W/O EMBOSS
2	26	101864201	SHOCK MOUNT
2	27	101899801	REAR PANEL GUSSET
2	28	101914301	ANGLE CLIP
1	29	101965702	AIR BOX MTG PLATE
1	30	101973901	BATTERY STOP
1	31	101995301	COWL WELDMENT
1	32	102003601	SHORT LONGERON RH 252
1	33	102003701	FRONT LONGERON RH 252
1	34	102003801	FRONT LONGERON LH 252
4	35	102003901	EXTENSION, XRT I-BEAM
1	36	102005401	LONGERON SHORT L.H. 252
4	37	102009801	MOUNT, XRT SPRING
2	38	102015201	FRONT GUSSET
2	39	102015301	GUSSET, REAR
2	40	102015601	STRINGER, SIDE, 1349.25
1	41	102045403	BOX WELDMENT - 252
1	42	102180901	REAR CROSS BRACE WELDMENT
1	43	102184301	I-BEAM CENTER WELDMENT

TORQUE 12-15 FT LBS
D2

QTY	ITEM	PART NO.	DESCRIPTION
		102003501	FRAME ASM 252
16	1	1218	SCREW, 5/16-18 x 1.250 HX HD CAP
32	2	1241	WASHER, 5/16 TYPE A FLAT
16	3	7473	LOCKNUT, 5/16-18 NYLON HEX
1	4	1010001	DECAL SERIAL NUMBER
1	5	1012243	GUSSET - X SECTION
2	6	1012244	Z SECTION
1	7	1013277	GAS TANK MOUNTING SUPPORT
2	8	1013299	SIDE PANEL BRACE CALL
1	9	1013650	PLATE-GAS TANK
1	10	1013651	SIDE PLATE-GAS TANK
1	11	1013921	GUSSET - Z SECTION
1	12	1014005	ANGLE - GAS TANK PLATE SUPPORT
1	13	1015237	CROSS PIECE
2	14	1015527	LONGERON LONG CALL
1	15	1017329	FRONT BUMPER MOUNT BRACE
1	16	1017330	BRACKET - FRONT BUMPER MTG.
1	17	1017345	BRACE, COWL CENTER
1	18	1017346	COWL BRACE
1	19	1017382	SPRING SUPPORT
1	20	1017387	PIPE - CROSS FRAME
1	21	1017405	SPRG SUPPORT STIFFENER
1	22	1017736	FRT SPRG SUPP STIFF



BALLOON CLARIFICATION

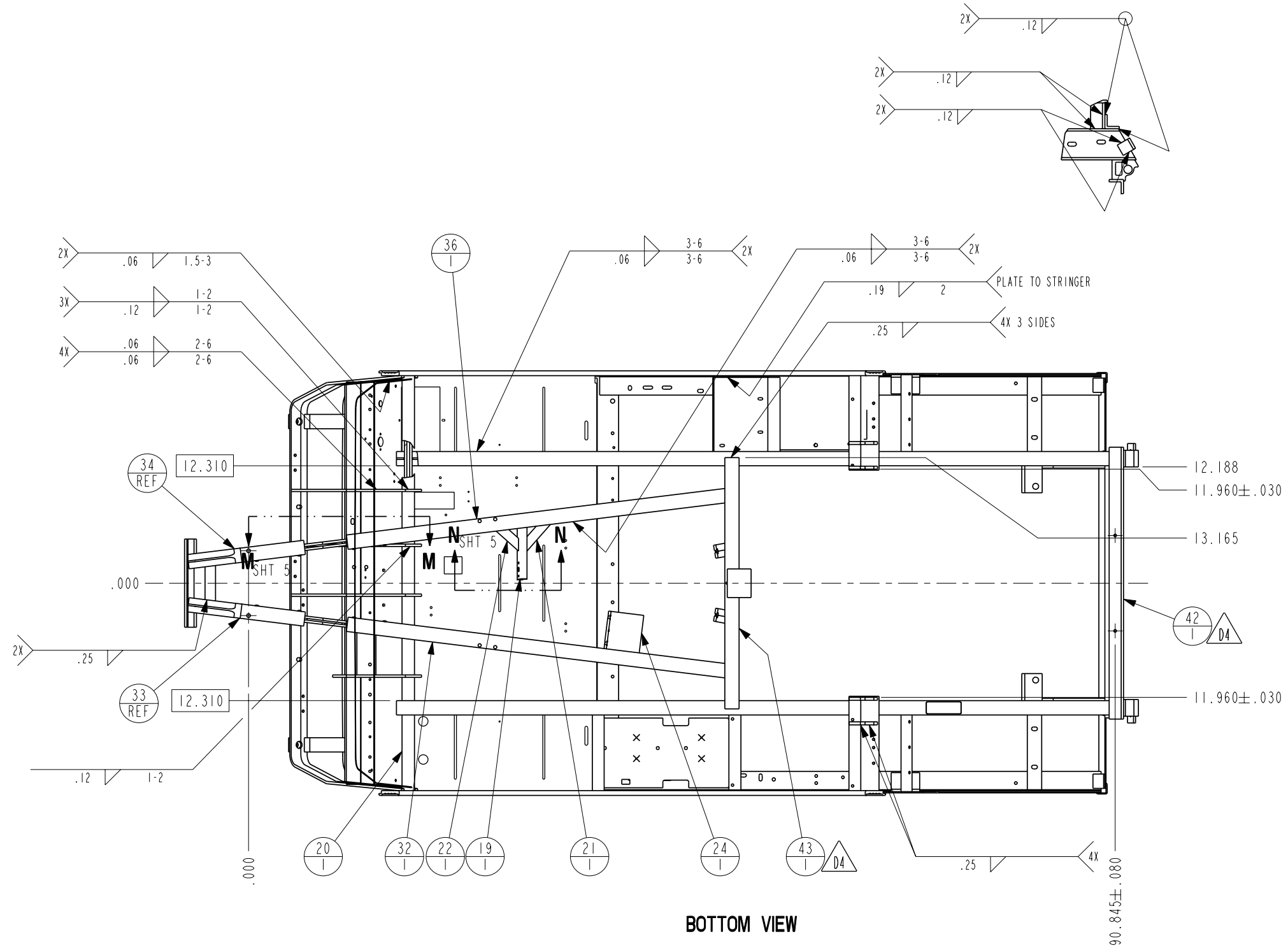


CLUB CAR IS THE SOLE OWNER OF THIS DRAWING AND ALL INFORMATION IN IT, WHICH ARE PROTECTED BY COPYRIGHT AND OTHER LAWS AND MAY BE SUBJECT TO LAWS REGARDING EXPORTING INFORMATION OUTSIDE OF THE U.S. THIS DRAWING MAY BE USED ONLY BY ITS RECIPIENTS FOR THE PURPOSE FOR WHICH IT IS PROVIDED AND ONLY BY THE RECIPIENT, WHO AGREES THAT IT WILL NOT, WITHOUT CLUB CAR'S PRIOR WRITTEN PERMISSION: 1) DISCLOSE NOR USE THIS DRAWING OR THE INFORMATION IN IT EXCEPT AS SPECIFIED ABOVE; OR 2) MAKE ANY COPIES OF OR EXTRACTS, REVISIONS, OR UPDATES FROM THE DRAWING. ALL COPIES MUST BE RETURNED TO CLUB CAR UPON COMPLETION OF THE WORK FOR WHICH THEY HAVE BEEN PROVIDED OR UPON ANY EARLIER REQUEST.

1830	D1: REVISED & REDRAWN IN PRO/E WITH DRAWING VIEWS D2: P/N 1010001 ADDED D3: PART NAME WAS "FRAME ASM GAS" D4: FRAME SIMPLIFIED WITH SUB ASSEMBLIES 101995301, 102045403, 102180901 & 102184301 D5: TOLERANCE BLOCK UPDATED	08/22/06	VA/IRB
ECN	DESCRIPTION OF CHANGE	DATE	BY

IF PRINTED, THIS DOCUMENT IS UNCONTROLLED.

UNSPECIFIED TOLERANCES DECIMALS: TWO PLACES: (1.XX) = ±.090 THREE PLACES: (1.XXX) = ±.060 ANGLES: ±2°	ALL DIMENSIONS PER ASME Y14.5M - 1994		
MATERIAL ASM	THIRD ANGLE PROJECTION	PART NAME FRAME ASM 252	
FINISH -	DATE 08/22/00	SIZE B	REV D
UNLESS OTHERWISE SPECIFIED REMOVE ALL SHARP CORNERS AND/OR DEBURR.	CRITICAL CHARACTERISTICS	INITIAL ECN 924	DWG NO 1020035
	WEIGHT LBS 121.26	SCALE: 0.078	UNITS: INCH
			SHEET 1 OF 5



BOTTOM VIEW

BALLOON CLARIFICATION

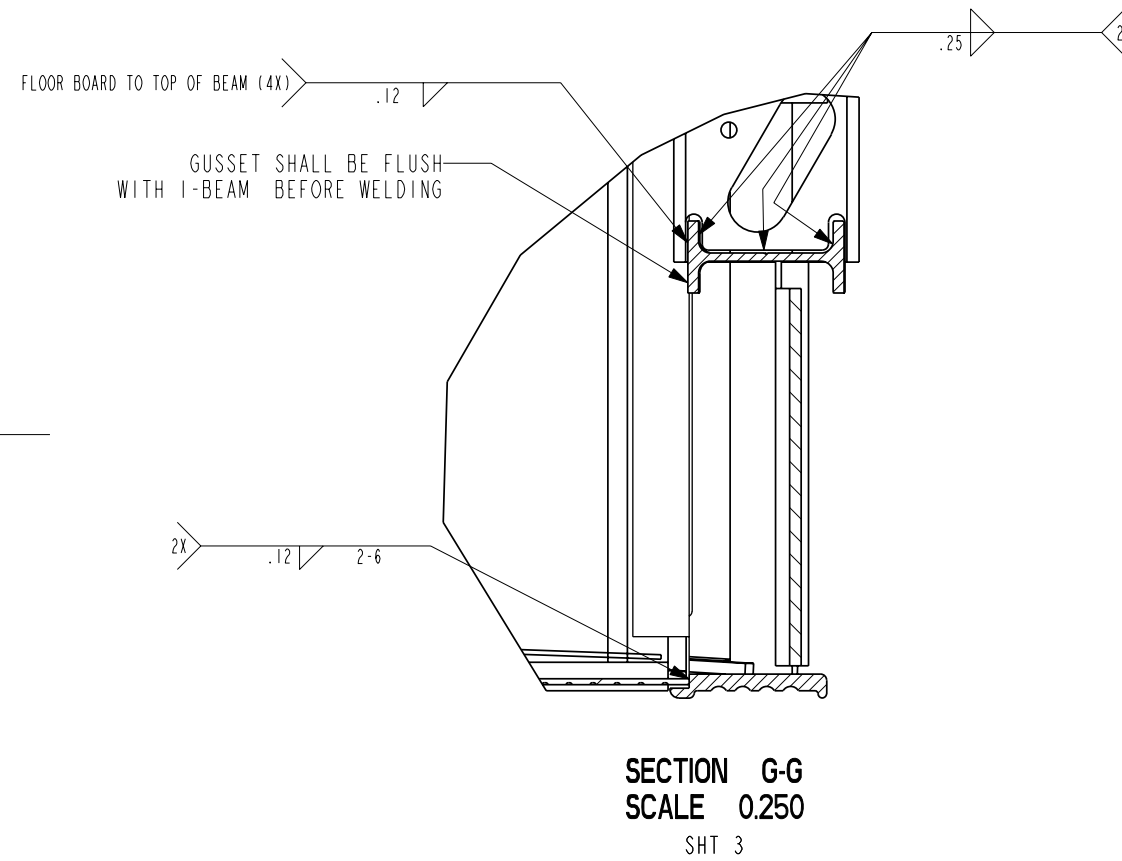
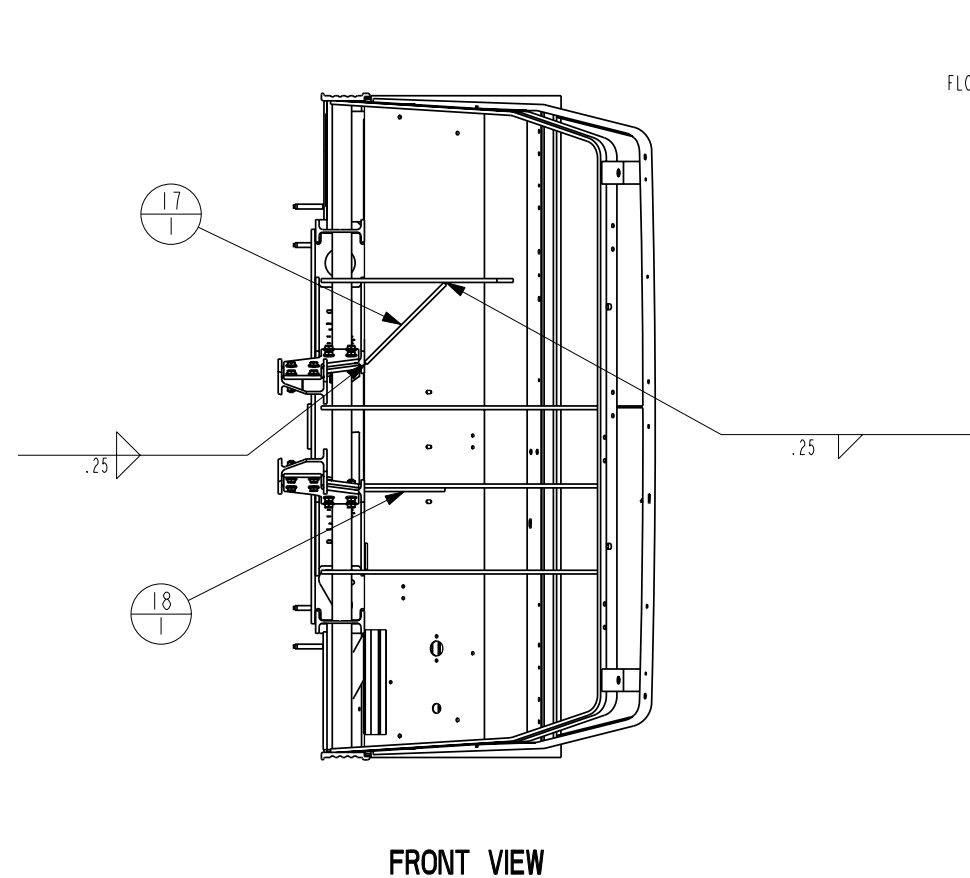
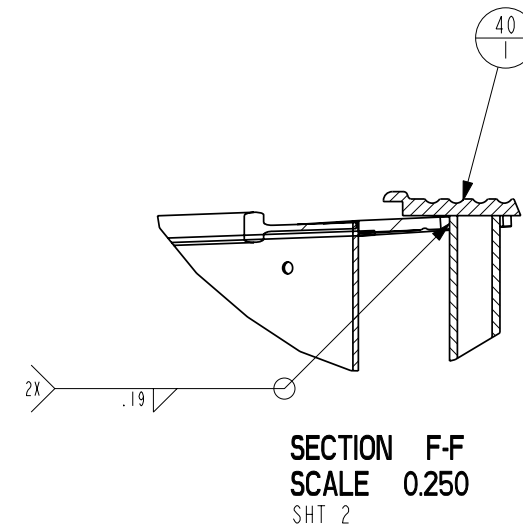
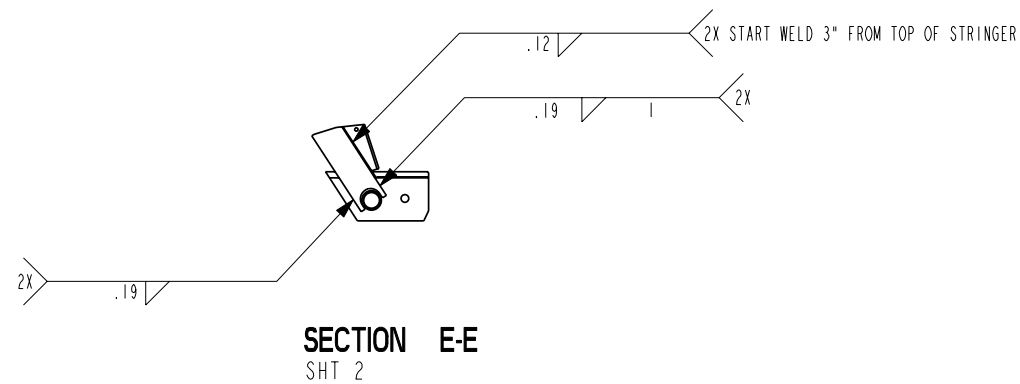
ITEM NO.
QTY

CLUB CAR IS THE SOLE OWNER OF THIS DRAWING AND ALL INFORMATION IN IT, WHICH ARE PROTECTED BY COPYRIGHT AND OTHER LAWS AND MAY BE SUBJECT TO LAWS REGARDING EXPORTING INFORMATION OUTSIDE OF THE U.S. THIS DRAWING MAY BE USED ONLY BY ITS RECIPIENTS FOR THE PURPOSE FOR WHICH IT IS PROVIDED AND ONLY BY THE RECIPIENT, WHO AGREES THAT IT WILL NOT, WITHOUT CLUB CAR'S PRIOR WRITTEN PERMISSION: 1) DISCLOSE NOR USE THIS DRAWING OR THE INFORMATION IN IT EXCEPT AS SPECIFIED ABOVE; OR 2) MAKE ANY COPIES OF OR EXTRACTS, REVISIONS, OR UPDATES FROM THE DRAWING. ALL COPIES MUST BE RETURNED TO CLUB CAR UPON COMPLETION OF THE WORK FOR WHICH THEY HAVE BEEN PROVIDED OR UPON ANY EARLIER REQUEST.

UNSPECIFIED TOLERANCES DECIMALS: TWO PLACES: (.XX) = ±.090 THREE PLACES: (.XXX) = ±.060 ANGLES: ±2°	ALL DIMENSIONS PER ASME Y14.5M - 1994	 THIRD ANGLE PROJECTION	 AUGUSTA, GA	
	MATERIAL ASM		DATE 08/22/00	PART NAME FRAME ASM 252
FINISH -	PREVIOUS NUMBER	SIZE B	INITIAL ECN 924	DWG NO 1020035
UNLESS OTHERWISE SPECIFIED REMOVE ALL SHARP CORNERS AND/OR DEBURR.	CRITICAL CHARACTERISTICS	WEIGHT LBS 121.26	SCALE: 0.078	UNITS: INCH

IF PRINTED, THIS DOCUMENT IS UNCONTROLLED.

1830	SEE SHEET 1 FOR REVISIONS	08/22/06	VA/IRB
ECN	DESCRIPTION OF CHANGE	DATE	BY



BALLOON CLARIFICATION

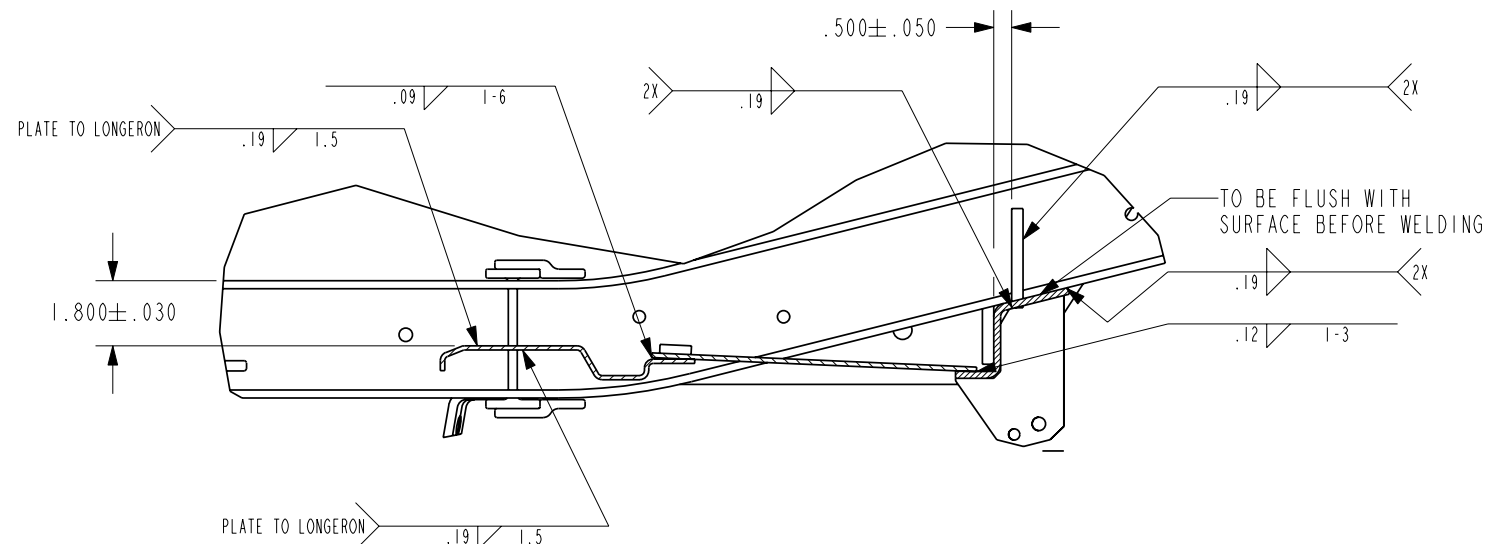
ITEM NO.
QTY

CLUB CAR IS THE SOLE OWNER OF THIS DRAWING AND ALL INFORMATION IN IT, WHICH ARE PROTECTED BY COPYRIGHT AND OTHER LAWS AND MAY BE SUBJECT TO LAWS REGARDING EXPORTING INFORMATION OUTSIDE OF THE U.S. THIS DRAWING MAY BE USED ONLY BY ITS RECIPIENTS FOR THE PURPOSE FOR WHICH IT IS PROVIDED AND ONLY BY THE RECIPIENT, WHO AGREES THAT IT WILL NOT, WITHOUT CLUB CAR'S PRIOR WRITTEN PERMISSION: 1) DISCLOSE NOR USE THIS DRAWING OR THE INFORMATION IN IT EXCEPT AS SPECIFIED ABOVE; OR 2) MAKE ANY COPIES OF OR EXTRACTS, REVISIONS, OR UPDATES FROM THE DRAWING. ALL COPIES MUST BE RETURNED TO CLUB CAR UPON COMPLETION OF THE WORK FOR WHICH THEY HAVE BEEN PROVIDED OR UPON ANY EARLIER REQUEST.

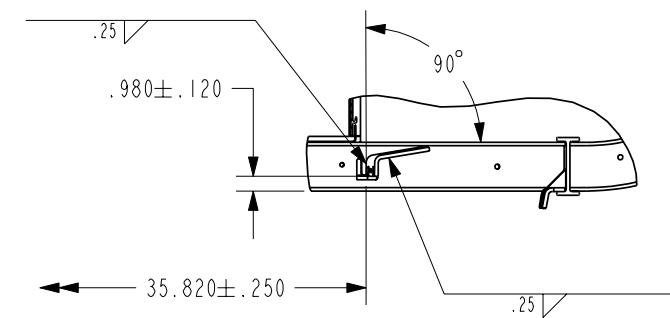
UNSPECIFIED TOLERANCES DECIMALS: TWO PLACES: (1.XX) = ±.090 THREE PLACES: (1.XXX) = ±.060 ANGLE: ±2°	ALL DIMENSIONS PER ASME Y14.5M - 1994	<p>Club Car AUGUSTA, GA</p>
	THIRD ANGLE PROJECTION	
MATERIAL: ASM	DRAWN: TTM	DATE: 08/22/00
FINISH: -	PREVIOUS NUMBER:	PART NAME: FRAME ASM 252
UNLESS OTHERWISE SPECIFIED REMOVE ALL SHARP CORNERS AND/OR DEBURR.	CRITICAL CHARACTERISTICS:	SIZE B
WEIGHT LBS: 121.26	SCALE: 0.078	UNITS: INCH
	INITIAL ECN: 924	DWG NO: 1020035
		REV D
		SHEET 4 OF 5

1830	SEE SHEET 1 FOR REVISIONS	08/22/06	VA/IRB
ECN	DESCRIPTION OF CHANGE	DATE	BY

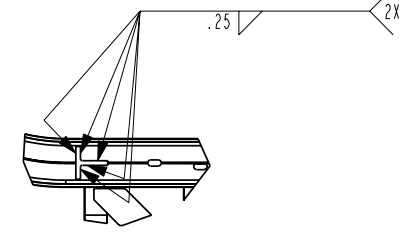
IF PRINTED, THIS DOCUMENT IS UNCONTROLLED.



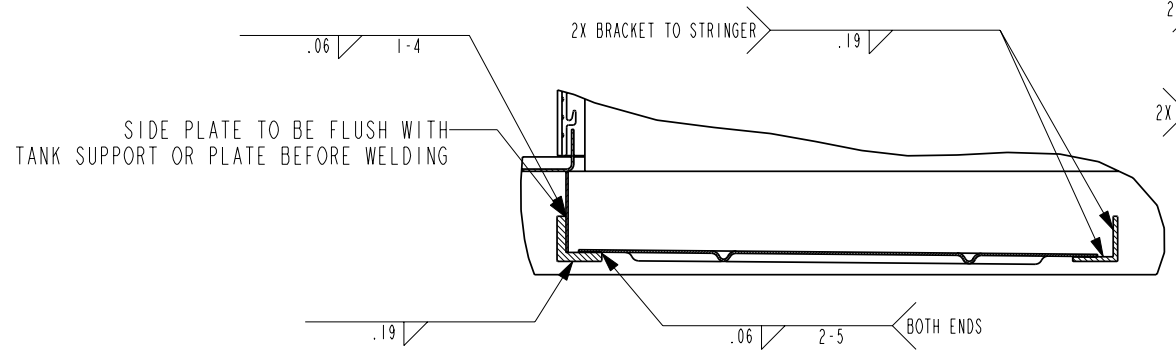
SECTION B-B
SCALE 0.188
SHT 2



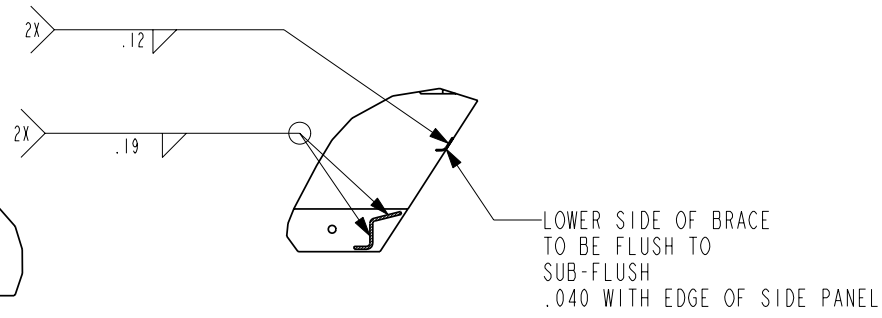
SECTION C-C
SHT 2



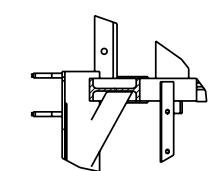
SECTION D-D
SHT 2



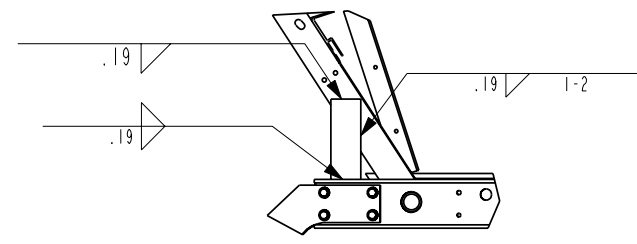
SECTION H-H
SCALE 0.188
SHT 2



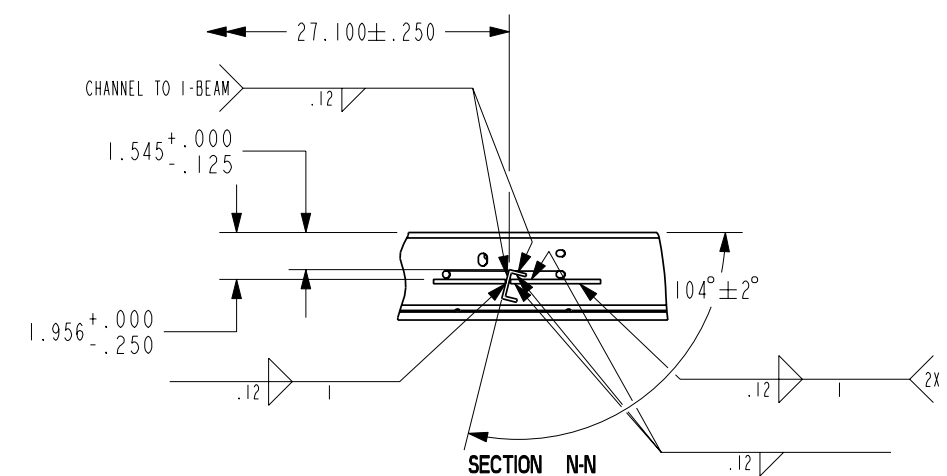
SECTION J-J
SHT 2



SECTION K-K
SHT 2



SECTION M-M
SHT 3



SECTION N-N
SCALE 0.125
SHT 3

BALLOON CLARIFICATION

ITEM NO.
QTY

CLUB CAR IS THE SOLE OWNER OF THIS DRAWING AND ALL INFORMATION IN IT, WHICH ARE PROTECTED BY COPYRIGHT AND OTHER LAWS AND MAY BE SUBJECT TO LAWS REGARDING EXPORTING INFORMATION OUTSIDE OF THE U.S. THIS DRAWING MAY BE USED ONLY BY ITS RECIPIENTS FOR THE PURPOSE FOR WHICH IT IS PROVIDED AND ONLY BY THE RECIPIENT, WHO AGREES THAT IT WILL NOT, WITHOUT CLUB CAR'S PRIOR WRITTEN PERMISSION: 1) DISCLOSE NOR USE THIS DRAWING OR THE INFORMATION IN IT EXCEPT AS SPECIFIED ABOVE; OR 2) MAKE ANY COPIES OF OR EXTRACTS, REVISIONS, OR UPDATES FROM THE DRAWING. ALL COPIES MUST BE RETURNED TO CLUB CAR UPON COMPLETION OF THE WORK FOR WHICH THEY HAVE BEEN PROVIDED OR UPON ANY EARLIER REQUEST.

UNSPECIFIED TOLERANCES DECIMALS: TWO PLACES: (1.XX) = ±.090 THREE PLACES: (1.XXX) = ±.060 ANGLES: ±2°	ALL DIMENSIONS PER ASME Y14.5M - 1994	<p>CLUB CAR AUGUSTA, GA</p>	PART NAME			
	THIRD ANGLE PROJECTION		FRAME ASM 252			
MATERIAL ASM	DRAWN TTM	DATE 08/22/00	SIZE B	INITIAL ECN 924	DWG NO 1020035	REV D
FINISH	PREVIOUS NUMBER	SCALE: 0.078	UNITS: INCH	SHEET 5 OF 5		
UNLESS OTHERWISE SPECIFIED REMOVE ALL SHARP CORNERS AND/OR DEBURR.	WEIGHT LBS	121.26				

1830	SEE SHEET 1 FOR REVISIONS	08/22/06	VA/IRB
ECN	DESCRIPTION OF CHANGE	DATE	BY

IF PRINTED, THIS DOCUMENT IS UNCONTROLLED.